



## RAU Climate Wall (R3)

AFFORDABLE, DURABLE, STABLE



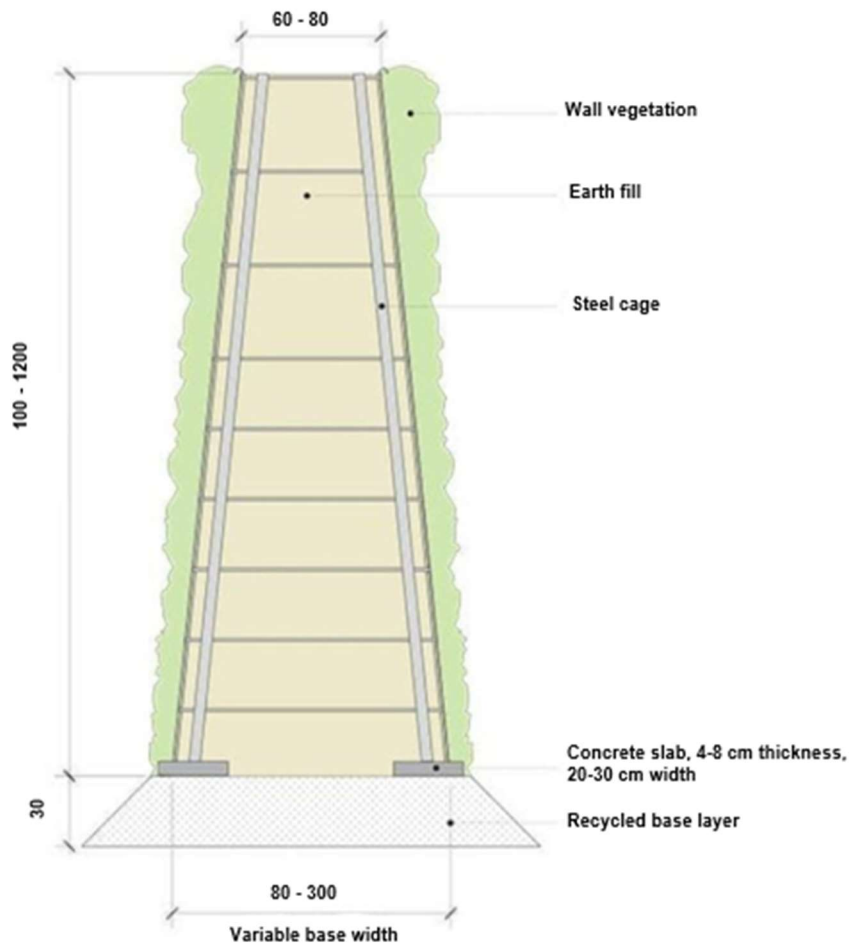
### Product properties

- Trapezoidal cross-section with a height of up to 12m
- Easily snap together
- Dimensionally stable and durable for up to 70 years
- Consisting of carrier profiles, vertical needles and steel grid

### Advantages

- No complex foundation necessary
- Quick and inexpensive to install
- All loose soils suitable as filling material
- Curves in small spaces, jumps in height and bumps can be easily implemented
- Deviations from the standard profile are possible





The easily connectable, enormously stable basket consists of carrier profiles, vertical needles and outdoor mats. The foundation is easy to make and fast to finish. All pourable floors may be used for the filling. Sharp curves, jumps in height or embankments are no problem for the R3. Deviations from standard profiles (a trapezoid with 60 centimeters crown width and 10% Angle on both sides) can often be realized without extra costs.

The RAU climate wall (R3) - noise protection wall was approved by KlimAktiv CO2.

As a partner for active climate protection, KlimAktiv has determined the carbon footprint for the RAU climate wall (R3) in a study. The result:

After just a few years, all the CO2 used to produce the product will be nullyfied by its effect.

From here on the climate wall actively binds CO2 for the rest of its lifespan of 60 years and more.



#### Classification of acoustic properties

	Sound insulation	Absorption
RAU Climate Wall R3	DLr = 68 dB	DLa = 20 dB